

Legal Spaceplan

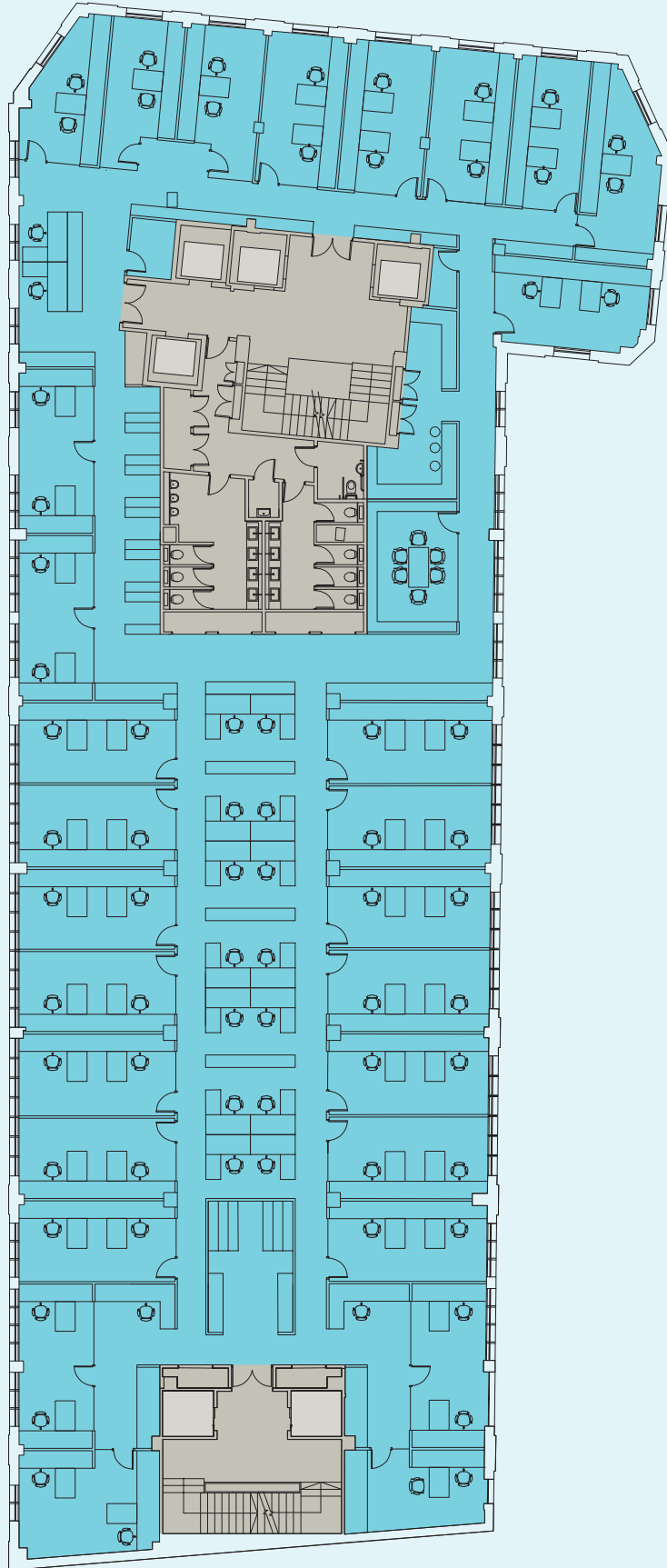
Fifth Floor

10,747 sq ft (998 sq m)

- Office
- Core
- Lifts

Occupation Density

Partners	5 (5 x Single Offices)
Partners & Associates	48 (24 x Double Offices)
Total Fee Earners	53
Secretary: Fee Earner Ratio	1:4
Total Secretaries	13
Paralegal: Fee Earner Ratio	1:14
Total Paralegals	4
Others	1
Total Headcount	71
Indicative Planning Ratio	19 sq m/203 sq ft per Fee Earner
Indicative Planning Ratio	14 sq m/151 sq ft per Total Staff



kks Space Planning
by KKS Strategy



N

Not to