

Corporate

Fifth Floor

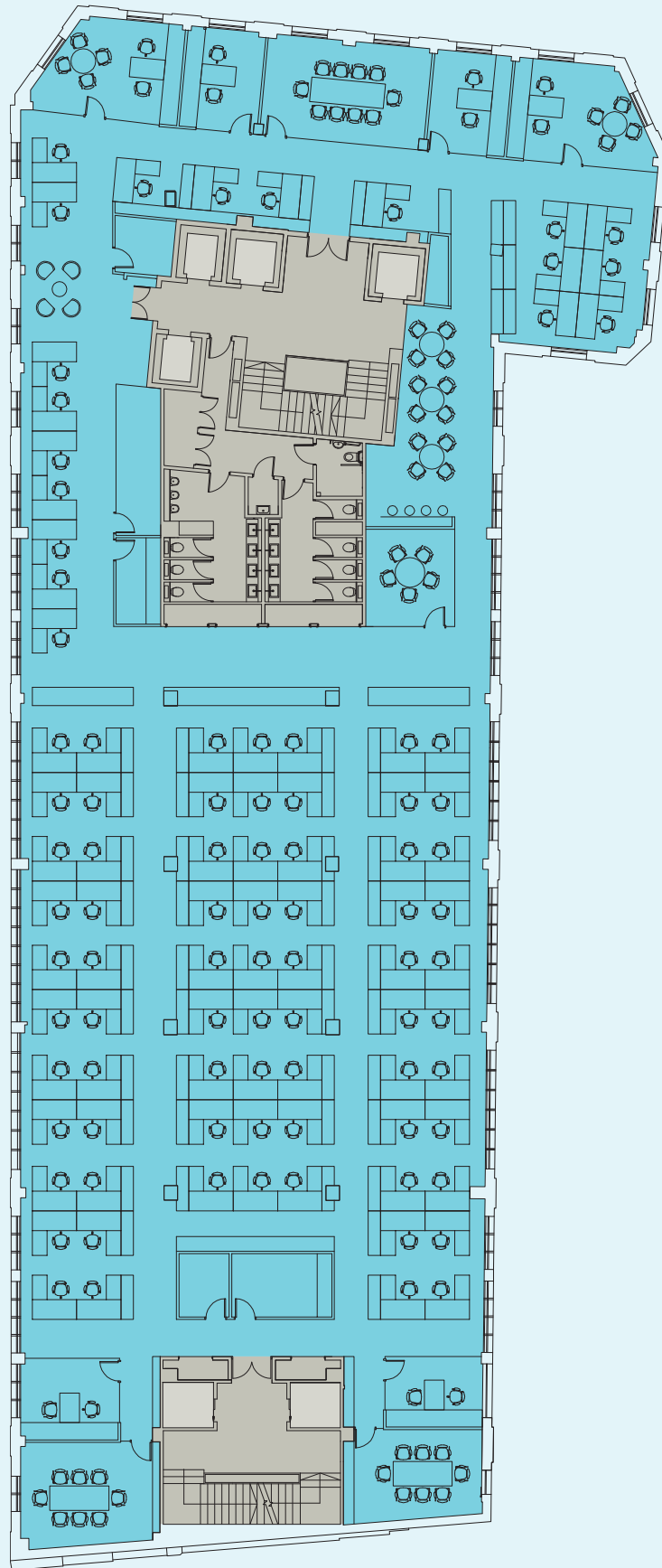
10,747 sq ft (998 sq m)

- Office
- Core
- Lifts

Occupation Density

Offices	6
Open Plan Workstation	92
Total Headcount	98
Indicative Planning Ratio	10 sq m/110 sq ft per Total Staff

kks Space Planning
by KKS Strategy



N

Not to